



SRI SRI UNIVERSITY

World University Rankings 2022



Affordable clean energy, Renovation of building, Solar energy, Energy

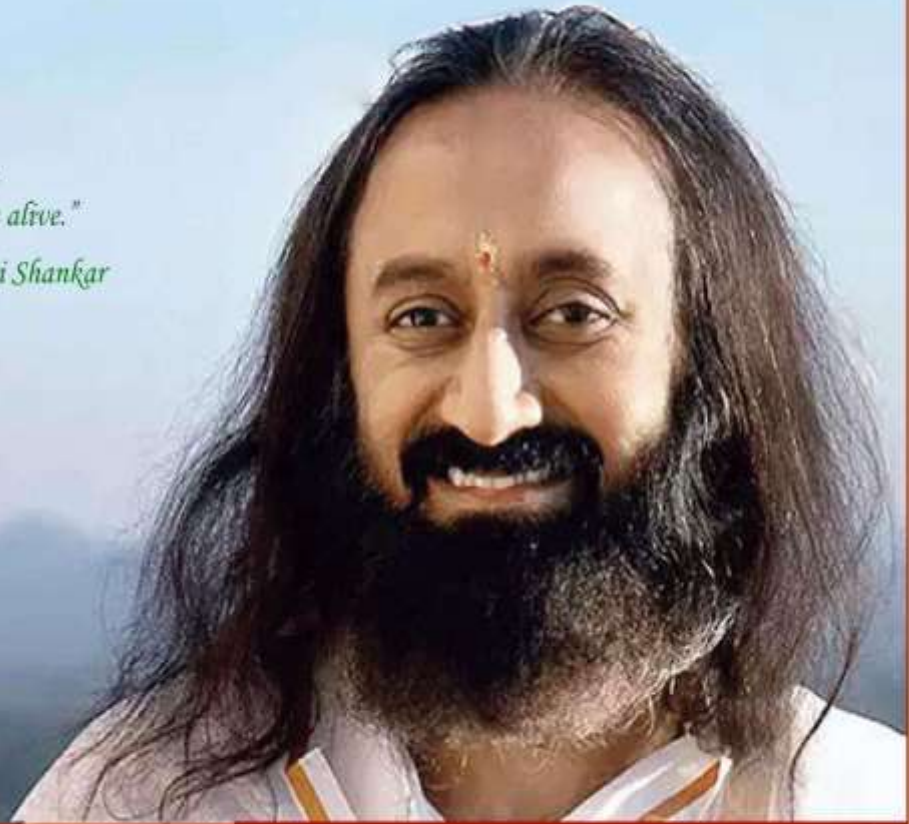


ENSURE ACCESS TO AFFORDABLE, RELIABLE, SUSTAINABLE AND MODERN ENERGY FOR ALL

Our Inspiration

*"Planting a tree
and caring for it
and considering it as
the abode of God has
kept the environment alive."*

- Gurudev Sri Sri Ravi Shankar



Sri Sri Ravi Shankar said, "Green energy is the only way we can sustain our planet".



ENSURE ACCESS TO AFFORDABLE, RELIABLE,
SUSTAINABLE AND MODERN ENERGY FOR ALL

About Us

Sri Sri University was established as a State Private University in Odisha, India which started its first academic year in 2012 and has been envisioned by Global Humanitarian, Gurudev Sri Sri Ravi Shankar ji. The University offers a range of pivotal, unique, and cutting-edge undergraduate, postgraduate degree programs under eight Faculties, short-term, diploma, and certificate courses, Doctoral studies (Ph. D.), that offers the best of the East and offers the best of the West.

The impressive list of undergraduate programmes offered at Sri Sri University includes B. Sc. (Data Science), B. Sc. (Osteopathy), B. Sc. (Psychology & Contemplative Studies), B. Sc. (Food, Nutrition, and Dietetics), B. Sc. (Agri-business), Bachelor in Interior Design, etc., and that of post graduate programmes offered includes M.Sc. Osteopathy (first time in Asia), MBA (Entrepreneurship), MBA (General Management), MBA (Agri-Business Management), M.Com., M.A./M.Sc. in Psychology and Contemplative Behaviour, M.Sc. Environment Science, B. Tech. & M. Tech. (Artificial Intelligence & Machine Learning), etc.

Located in a sprawling 188- acre green lush campus, Sri Sri University takes pride in offering a curriculum that enriches both domain expertise and life skills. It provides a unique social culture that nurtures a rich learning environment and aids excellence in students through its virtually smoke-free, alcohol-free, drug-free, and completely vegetarian campus. The University defines Excellence as an academic process of motivating the students to learn in ways that make a sustained, substantial, and positive influence on how they think, act, and feel which defines our core value of **Learn-Lead-Serve**.

Sri Sri University has been ranked by Times Higher Education World University Impact Rankings on Sustainable Development Goals (SDGs) in the band of 601-800 based on all 17 SDGs. In the top four individual SDGs, Sri Sri University was ranked in the band of **101-200** for SDG 2: Zero Hunger. For the SDG 13: Climate Action and SDG15: Life on Land stand in the band of 201-300. Sri Sri University has been ranked **1st in Odisha, 7th in India, and 250th in the**



world as per UI Green Metric Awards World University Rankings 2022 which is a quantum jump from 2020's ranking which was 3th in Odisha, 7th in India, and 304th in the world.

Sustainable Development Goals:

SDG7 aims to ensure access to affordable, reliable, sustainable and modern energy for all. The world is making good progress on increasing access to electricity and improving energy efficiency. However, millions of people throughout the world still lack such access, and progress on facilitating access to clean cooking fuels and technologies is too slow. In addition, a survey conducted in selected developing countries revealed that one quarter of the health facilities surveyed were not electrified, and another quarter had unscheduled outages, affecting their capacity to deliver essential health services. Such deficiencies weaken the health system's response to the current health crisis.

The target outline below focuses on the efficient use of natural resources and on boosting sustainable energy sector expertise through targeted capacity development. Our solar energybased training programme provides leading on-the-job education for emerging energy planners and to rural youth. And by exploring overlapping natural resource use, our research is determining integrated practices to improve energy efficiency and resource recycling, making modern energy production cleaner and more affordable.

Targets:

Goal 7.2: University measures towards affordable and clean energy

Goal 7.2.1 Energy-efficient renovation and building

Goal 7.2.2 Upgrade buildings to higher energy Efficiency

Goal 7.2.3 Carbon reduction and emission reduction Process

Goal 7.2.4 Plan to reduce energy consumption

Goal 7.2.5 Energy wastage identification

Goal 7.2.6 Divestment policy



ENSURE ACCESS TO AFFORDABLE, RELIABLE, SUSTAINABLE AND MODERN ENERGY FOR ALL

Goal 7.3 Energy use density Goal

Goal 7.3.1 Indicator: Energy usage per sqm

Goal 7.4 Energy and the community

Goal 7.4.1 Local community outreach for energy efficiency

Goal 7.4.2 100% renewable energy pledge Year: 2019 or 2020

Goal 7.4.3 Energy efficiency services for industry

Goal 7.4.4 Policy development for clean energy technology

Goal 7.4.5 Assistance to low-carbon innovation

Introduction:

"In alignment with the 2030 Agenda for Sustainable Development, Sri Sri University (SSU) in Cuttack continues its unwavering commitment to a sustainable future that ensures equality and ample resources for all. Since its establishment in 2012, SSU has remained dedicated to fostering positive societal impact, not only through its academic initiatives but also by inspiring its students to champion sustainability in their own capacities.

As an institution with the power to drive change, SSU actively engages with policymakers, industry leaders, businesses, NGOs, media, students, and academic scholars to explore and implement collaborative solutions and innovations aimed at reducing power consumption, promoting renewable energy production, and contributing to the global pursuit of a sustainable world order. Our dedication to Sustainable Development Goal 7 (SDG-7), which focuses on affordable and clean energy, remains at the forefront of our mission.

At SSU, our commitment to sustainability extends beyond rhetoric and embraces practical actions. Our campus is a living laboratory for sustainable practices, with numerous SDG-7 related activities and initiatives spanning research, innovation, teaching, operations, outreach, and partnerships. We have undertaken efforts to categorize our academic offerings, matching our courses to relevant aspects of SDG-7, creating a comprehensive sustainability course inventory. Additionally, we are in the process of categorizing student engagement, including community-based learning, further embedding sustainability principles in our educational ethos.

As we move forward into this year, Sri Sri University remains dedicated to advancing SDG-7 and contributing to a cleaner, more sustainable energy future. We are resolute in our



ENSURE ACCESS TO AFFORDABLE, RELIABLE, SUSTAINABLE AND MODERN ENERGY FOR ALL

mission to shape not only informed minds but also responsible global citizens committed to creating positive change for our planet and its people."

Report design:

For Sustainable Development Goals-7 there are five categories of information:

- **Research on clean energy**
- **University measures towards affordable and clean energy**
- **Energy use density**
- **Energy and the community**
- **News**

Research on clean energy:

The university has collaborated with The India Office of Nobel Peace Laureate Vice President of USA Al Gore's The Climate Reality Project (TCRP), USA and Sparsh Foundation, JK Paper Mills Ltd, Odisha, with inspiration from Gurudev Sri Sri Ravi Shankar, whose work and initiatives are taken at the global stage by the Art of Living Foundation and the local point by the Sri Sri University in areas solar power, green campus, and optimal use of energy, etc.

University measures towards affordable and clean energy:

- Sri Sri University are committed to follow the prevailing energy efficiency standards in India for our renovation and constructions of buildings. The policy for energy efficiency standards for builds has been aimed to decrease the Carbon emissions, to optimize the electricity consumption and minimize the wastage and to use energy efficient fixtures and reduce the running cost.
- The relevant measures include the buildings designed for reduced heat absorption and temperature control, natural ventilation, lighting and natural laterite stone for construction, smart classes, use of LED lights in the hostels, use of local materials for the construction.



- To enhance the energy efficiency, the 8Kw solar panels is installed in the campus, which generate 35 units of electricity every day and approx. 13000 units per year.



- Total 75 solar lights are used in the University campus. Total generation from solar street lights is measured to be 35 units per day = Approx. 13,000 units per year.

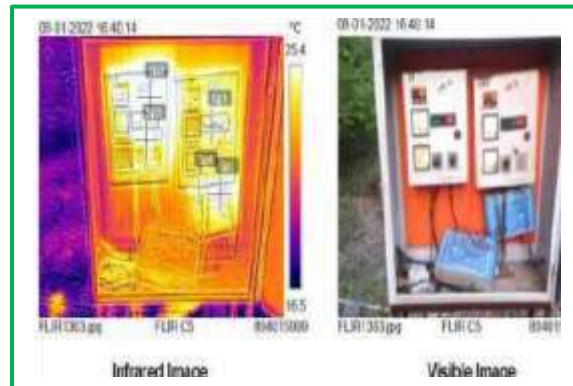


Here are the key energy-saving measures that have been implemented at SSU from 2022 to 2023:

Appliances	Total Number	Total number energy efficient appliances	Percentage (%)
Lamp	4964	4800+164 added in between 2022-23(LED Lamps)	100%
Fans	2375	2300+75 added in between 2022-23(BLDC Motor)	100%
		Total Percentage	100%

ENSURE ACCESS TO AFFORDABLE, RELIABLE, SUSTAINABLE AND MODERN ENERGY FOR ALL

- Sri Sri University pays close attention to monitor energy consumption at the campus area. There are energy meters in every building to monitor the electrical consumption.



- SSU has taken several step to prevent the electricity from leakage as well as monitor the unnecessary use of AC, light, fan in different buildings.
- How SSU has keep in balanced the energy consumption with increase in population



July-22

Aug-22

Sept-22

Oct-22

Nov-22

Dec-22

Jan-23

Feb-23

Total kWh	190861	192923	231131	187618	181933	174060	162918	181716
Total Cost (in Rs.)	1398913.73	1414520.69	1694331.23	1374562.94	1332965.89	1275720.80	1194092.94	1331964.28
	Mar-23	April-23	May-23	June-23	Total			
Total kWh	258109	266967	288927	240454	2557617			
Total Cost (in Rs.)	1890678.97	1956526.11	2117113.21	1762929.82	18743352.41			

1. Total electricity consumption from Apr-19-Mar 20 is 1811035 kWh
2. Total electricity consumption from Apr 20-Mar 21 is 800000 kWh
3. Total electricity consumption from Apr 21- Mar 22 is 1,869,698 kWh
4. **Total electricity consumption from July 22- June 23 is 2557617 kWh**

Energy use density:

Total electricity consumption from July 22- June 23 is 2557617 kWh = 9,206.2212 GJ

Building area of university buildings (square meters): 77289.66

Electricity consumption per square metre in 2023 = 9,206.2212 /77289 =0.11GJ/m²

Definition: Floor area of SSU’s buildings (Sq. mtrs)

Energy and The Community:

In the spirit of contributing to the field of sustainable energy, SSU University is coordinating activities with other organization to promote joint academic and technical endeavours, keeping in view the following scope of collaboration.

1.Renewable Energy Generation/Harvesting: Adopting Clean and Sustainable Energy, such as- Solar renewable energy sources.



2. Carbon Reduction and Emission Reduction Process: When it comes to removing human caused emissions of the greenhouse gas carbon dioxide from Earth's atmosphere, trees are a big help. Through photosynthesis, trees pull gas out of the air to help grow their leaves, branches, and roots. Our university organizes plantation drives throughout the year inside the campus as well as in nearby localities. Our university ranks 6th in India and 238th in the world in the UI Green Metric World University Rankings. Various other process that helps in reduction of carbon are

1. Eco-Friendly Transportation
2. Bicycle Usage
3. Electric Vehicles
4. Natural Gas Adoption
5. Tree Plantation



3. Energy Audit and Management: Exchange of procedures and ideas for Energy Audit and Management in the Institutions.

4. Training program on Renewable Energy systems: In the premises, the SSU is collaborating with its technology partner, Schneider Electric, on course development and implementation for the training of professionals and students on solar energy systems. This centre also provides training to Rural Youth on Solar energy, which is getting traction from renewable energy market.

A. SOLAR TECHNICIAN					
Year	Batch No	St. Dt	End Dt.	No of Student	Total students per Year
2022	001-2022	02-06-2022	03-09-2022	19	34
	002-2022	18-07-2022	18-10-2022	15	
2023	003-2023	13-02-2023	13-05-2023	19	40
	004-2023	21-08-2023	20-11-2023	21	

ENSURE ACCESS TO AFFORDABLE, RELIABLE, SUSTAINABLE AND MODERN ENERGY FOR ALL

					Total	74
B. ASSISTANT ELECTRICIAN						
2022	001-2022	14-11-2022	27-12-2022	17	17	
2023	002-2022	21-06-2023	04-08-2023	16	16	
					Total	33

					Grand Total	107
--	--	--	--	--	--------------------	------------



Solar Technician Practical Class



ENSURE ACCESS TO AFFORDABLE, RELIABLE,
SUSTAINABLE AND MODERN ENERGY FOR ALL


- **NSDC- PMKVY 4.0 Project with a Target of 240:**

The Ministry of Skill Development & Entrepreneurship (MSDE), Govt. of India, implemented its flagship skill development scheme of Government of India - **Pradhan Mantri Kaushal Vikas Yojana 4.0 (PMKVY 4.0).**

With the roll-out of the National Education Policy (NEP) in 2020, there has been a renewed focus on vocational skill training imparted by schools and higher education institutes, thus integrating mainstream academics with practical vocational skill

Sri Sri University having all the requisite infrastructure and a registered Training Partner of National Skill Development Corporation, **received a target of 240 from NSDC-PMKVY 4.0** under the Skill Hub Initiative scheme for the period **Mar-Jul 2023.**

News:

SDG Short title	Description
	Sri Sri Centre for Advance Research on Water Resources and Environmental Management has organized a workshop on Climate Change Mitigation. In this workshop, B.Sc Environmental Science (Hons.) students attended the event and interacted with experts in sustainable production. The workshop focused on sustainable production and a practical approach to climate change.



ENSURE ACCESS TO AFFORDABLE, RELIABLE, SUSTAINABLE AND MODERN ENERGY FOR ALL



Workshop on Climate change, women. Certificate of energy literacy and their adaptive capacity. Interaction of students of Sri Sri University with village women

MEMORANDUM OF UNDERSTANDING

THIS MEMORANDUM OF UNDERSTANDING IS EXECUTED

AT

SRI SRI UNIVERSITY

on 07.07.2023

BETWEEN

The Institution of Green Engineers (IGEN) (Registered under Societies Registration Act 27 of 1975, wide Registration No: CN/SR/30320 hereinafter referred to as IGEN) having its registered office at F1, RPN, Ambatur, Chennai-58, India, Canada and Australia, (www.thegen.org) represented by its President Prof. Dr. L. RAMESH, which expression shall, unless repugnant to the meaning or context thereof, be deemed to include its/their successors, heirs, and administrators, hereinafter referred to as the PARTY OF THE FIRST PART

AND

Sri Sri University (SSU), Ward No 3, Sandhipur, Godnati, Cuttack, Odisha- 754006, (Hereinafter called to as SSL) a State Private University established by Sri Sri University Act- 2009 by Odisha State Legislative Assembly, has been founded by His Holiness Gurudev Sri Sri Ravi Shankar a global humanitarian and thought leader in Yoga and

A. Saha
7/7/23

The Institute of Green Engineer signed a MOU with Sri Sri University on 7/7/23 towards the development of sustainable goal.