



SRI SRI UNIVERSITY

World University Rankings 2022



Sustainable Cities and Communities

Table of content

	Page No.
About Us	3
Introduction	4
Our efforts towards a Sustainable Community	5
Support of arts and heritage.....	6
Sustainable Practices	27

About Us

Sri Sri University was established as a State Private University in Odisha, India which started its first academic year in 2012 and has been envisioned by Global Humanitarian, Gurudev Sri Sri Ravi Shankar ji. The University offers a range of pivotal, unique, and cutting-edge undergraduate, postgraduate degree programs under eight Faculties, short-term, diploma, and certificate courses, Doctoral studies (Ph. D.), that offers the best of the East and offers the best of the West.

The impressive list of undergraduate programmes offered at Sri Sri University includes B. Sc. (Data Science), B. Sc. (Osteopathy), B. Sc. (Psychology & Contemplative Studies), B. Sc. (Food, Nutrition, and Dietetics), B. Sc. (Agri-business), Bachelor in Interior Design, etc., and that of post graduate programmes offered includes M.Sc. Osteopathy (first time in Asia), MBA (Entrepreneurship), MBA (General Management), MBA (Agri-Business Management), M.Com., M.A./M.Sc. in Psychology and Contemplative Behaviour, M.Sc. Environment Science, B. Tech. & M. Tech. (Artificial Intelligence & Machine Learning), etc.

Located in a sprawling 188- acre green lush campus, Sri Sri University takes pride in offering a curriculum that enriches both domain expertise and life skills. It provides a unique social culture that nurtures a rich learning environment and aids excellence in students through its virtually smoke-free, alcohol-free, drug-free, and completely vegetarian campus. The University defines Excellence as an academic process of motivating the students to learn in ways that make a sustained, substantial, and positive influence on how they think, act, and feel which defines our core value of Learn-Lead-Serve.

Sri Sri University has been ranked by Times Higher Education World University Impact Rankings on Sustainable Development Goals (SDGs) in the band of 601-800 based on all 17 SDGs. In the top four individual SDGs, Sri Sri University was ranked in the band of 101-200 for SDG 2: Zero Hunger. For the SDG 13: Climate Action and SDG15: Life on Land stand in the band of 201-300. Sri Sri University has been ranked **1st in Odisha, 7th in India, and 250th in the world** as per UI Green Metric Awards World University Rankings 2022 which is a quantum jump from 2020's ranking which was 3th in Odisha, 7th in India, and 304th in the world.

Being from the parentage of the Art of Living, one of the largest volunteer based organization in the world, and given the stature of the work of our founder Poojya Gurudev Sri Sri Ravi Shankar ji in the last four decades, we aspire to contribute in finding solutions to the problems faced by the world at

large by way of conflict resolution, agriculture, Arts & Crafts, etc. Few of our initiatives in this regard includes the creation of Sri Sri University Resource Centre for Climate Change & Sustainability Education & Practices, Sri Sri Advanced Global Centre for Conflict Resolution and Peace Studies, and Sri Sri Centre for Advanced Research in Water Resources and Environment Management, to name a few.

Introduction

The UN pledge of Goal 11 to make cities and human settlements inclusive, safe, resilient and sustainable provides an unparalleled opportunity for the attainment of collective and inclusive progress, and for the achievement of sustainable development in the world. The local dimension of development has been recognized in contributing to awareness raising for poor environmental conditions, and high production of greenhouse gas emissions, their potential for growth and development makes them strong drivers for positive change.

The key indicators of Sustainable Development Goals (SDGs) 11 are to support the art and cultural heritage and the sustainable practices like sustainable commuting and affordable housing.

Adequate and affordable housing leads to benefits in health, education and economic opportunities. Similarly, a functioning transport system is necessary for people to reach their places of work, education, services and social activities, all of which affect quality of life. In addition to availability, the type, quality and safety of transport systems are also crucial as it has a direct impact on environmental conditions and greenhouse gas emissions.

The contribution and efforts to protect and safeguard the world's cultural & natural heritage in sustainable development is widely recognized, including the transversal role it plays in achieving several other associated SDGs.

Education, innovation and awareness are significant aspects, which are integral parts of all 17 SDGs. These aspects are directly related to the higher educational institutions, therefore, active participation of higher educational institutions can play important role in achieving the SDGs in stipulated time.

Our efforts towards a Sustainable Community

The Sri Sri University is proactive in promoting the cultural heritage of the region by organizing various extracurricular activities like Heritage walks and awareness programs for language, local art, traditions and folklore, hands-on workshops to train students on best sustainable practices to be adopted. The department of Architecture and the department of Art, Culture and Indic studies of Sri Sri University conduct various programs for the promotion of cultural heritage.

Prior to the establishment of this University campus, designated land was a brown field, which has transformed to a green landscape, especially its south campus. The green campus has been achieved with the efforts of a comprehensive plantation programme. Public and green spaces offer opportunities to enrich health and the quality of life for all people living in and around the campus.

The University promotes sustainable practices like mass transit by providing buses and van pools for the Staff and students of the local area to commute to the University. Policies also have been made to promote Sustainable commuting on the campus.

The University provides affordable accommodation facilities within the campus for students and faculties. SDG 11 promotes safe, affordable and sustainable living conditions that helps in improving our physical and psychological health, strengthening our communities, and making our neighbourhoods more attractive places to live and work are just some of the benefits.

The University has been taking steps to find potential solutions to create more sustainable, inclusive and innovative green buildings on the campus that stand out due to their high energy efficiency and making it more habitable.

SDG 11 (Sustainable Cities & Communities) promotes cultural heritage and sustainable practices essentially required for the sustainable development of the communities. The targets outlined below focus on sustainable communities by providing public access to buildings and landscapes of cultural significance, contributing and preserving the intangible heritage of India, promoting and providing the

faculties and students of local areas access to sustainable commuting systems, safe and affordable housing. Keeping with the motto of an ecologically sensitive green campus all the building structures have been strategically constructed using locally available materials to minimize further damage to the site. Sri Sri University plays an essential role in collaborating with local planning authorities and industrial partners through consultancy projects that work continuously to promote sustainable and resilient housing projects for the welfare of the local community.

Support of arts and heritage

Public access to buildings

In keeping with the motto of Art of Living Foundation towards supporting the Arts and Heritage, SSU under AOL banner supports numerous activities for the promotion of the arts by encouraging public participation. Student festivals like Orion invite students from other colleges on campus for active participation in cultural, sports and other competitions. The Osteopathy and Ayurveda, two unique offerings in SSU whose therapies and treatments are routinely availed by public.



Figure 01: Student's Annual Fest Orion celebration on SSU Campus

Sri Sri University has always been in the forefront of community service since its inception. Health Camps, Vaccination drives, etc. are conducted in nearby villages at regular intervals to ensure that the local community in and around the campus is benefitted from the resources of our institution. Sri Sri

University also has public access to two of its Departmental Hospital under the Faculty of Health and Wellness. Department of Osteopathy and Sri Sri College of Ayurvedic Science and Research Hospital (SSCASRH) have a full-fledged hospital each, where it is open for public to benefit from.



Figure 02: Public availing Therapies at Department of Osteopathy in Sri Sri University

Our university is dedicated to developing an ecologically sound campus and a superior learning setting for outdoor instruction. It is not only rich in architectural aspects, but it is also significant in terms of culture and history.

The first idol to arise on the site was of Lord Ganesha during the excavation operations for the University's building. The local community can visit the more than 500-year-old antique statue of Lord Ganesha on campus during college hours, from 9:30 am to 5:30 pm, from Gate No. 01, the main entrance to the University. Every day, the Pooja (prayer) is conducted here.



Figure 03: Lord Ganesha is now a temple in the campus where public offer prayers

An age-old ritual, Rudra Pooja that has been practiced continuously from the beginning of time immemorial, is performed at Sri Sri University to honor and promote India's intangible cultural legacy. Every Monday and Thursday, the general public and guests can attend the Rudra Pooja at Sri Sri University's main academic building, the Shruti Building.



Figure 04: Rudra Pooja performed at Sri Sri University with public participation

World renowned spiritual Master, humanitarian, and a global messenger of peace and life time President of Sri Sri University, Gurudev Sri Sri Ravi Shankar was in Odisha for a two-day state visit. A Maha Satsang was organised in Sri Sri University premises on 29 January 2022 which was attended by more than 10,000 people coming from different parts of the country and guests from few countries.



Figure 05: Maha satsang with Gurudev Sri Sri Ravi Shankar Sri Sri University

Under the banner of G20, Sri Sri College of Ayurveda science and Research hospital started a program W20 to give prime importance to MOTHER. In this connection ‘National Safe Motherhood Day’ was celebrated on 11th April 2023. The doctors delivered lecture and explained the women about ‘Safe Motherhood’ and conducted a free health check-up. It was attended by the women from the surrounding local villages.



Figure 06: National Safe Motherhood Day Program by Ayurveda team for local public

Public access to libraries

Public access to universities is a critical component of ensuring equal opportunities for education and fostering social and economic development. It embodies the principles of inclusivity, democratization of knowledge, and breaking down socio-economic barriers.

For the advantage of those looking for information, policies for public access to the library have been developed and put into place in line with Sri Sri University's progressive vision. We at Sri Sri University realize how important it is to make the most of digital communication in the current environment, therefore we regularly share our quarterly newsletters, book lists, and other materials with neighboring institutions to let them know they may take advantage of this service. Temporary ID cards are given to visitors to our library who are students from different HEIs or colleges, including

those who have registered with a nationwide access borrowing scheme, visiting scholars, schoolchildren on organized field trips, and teachers. They are given access to the books for a week.

The Sri Sri University Library is a centrally organized collection of materials with a wide range of media (text, video, and hypermedia) as well as human services. Every year, events are held to celebrate World Reading Day. These events include lectures and book fairs with a specific theme, as well as opportunities for the general public to participate. In 2022, Faculty of Management conducted a Book Fair under SSU iMUN. It was a very successful event. The library is well-designed, including study areas and resource rooms that are accessible by stairs and elevators. On demand, we occasionally organize free donations of out-of-date books and periodicals.



Figure 07a: The Library Block at Sri Sri University



Figure 07b: Book Fair by SSU iMUN (Faculty of Management) at Sri Sri University

Public access to Museums

Sri Sri University creates a vibrant ambience of art and culture on the campus by encouraging the local art and artefacts. It conducts innumerable workshops and competitions and also open up the galleries and exhibition

displaying the works of the students for the public visits. Faculty of Architecture conducted a workshop on Pot painting and Glass painting and the artefacts are exhibited for public. They also conducted competitions like Rangoli art where students were encouraged to come up with different cultural themes to encourage the vibrancy of Odisha.



Figure 08: Hands-on experience by students in art and craft workshop organized by Faculty of Architecture



Figure 09: Students participating in Rangoli competition as a part of cultural events

Sri Sri University plans a number of events each year for the participation of Sri Sri University and other neighborhood institutions. One of the biggest cultural festivals in Odisha, our annual cultural festival **Orion** is ranked among the **top 10 youth festivals in the state**.

People's perspectives about celebration are altered by the Orion festival, and this has a big impact on campus culture. The festival, which is open to students from several universities, presents a range of ESR activities and seminars for personal development throughout the year. Despite being mostly recreational, they provide young people from Sri Sri University and neighboring universities with a forum to explore their untapped creative potential. Every year Sri Sri University organizes a series of events for participation of Sri Sri University and other local Institutions. Our **Annual Cultural Festival Orion** is one of the largest cultural fest which is recognized as one of the top ten youth festivals in Odisha.

The Orion festival consists of most interactive, motivated and enthusiastic people and this has a big impact on campus culture. The festival, which is open to students from several universities, presents a range of ESR activities and seminars for personal development throughout the year. Despite being mostly recreational, they provide young people from Sri Sri University and neighboring universities with a forum to explore their untapped creative potential.

Students from the other area universities take part in a number of sporting events organized by Sri Sri University. A discussion by an inspirational speaker, many seminars on filming, handmade production, designing, and performing arts, among other themes, are among the other non-competitive activities that are offered at Hard-discussion. Along with the local participants, these events usually serve a sizable number of people from regional and national colleges.

The Orion Fest team is made up of the core team, the design team, the web team, and the media cell. Participants in these come from a range of backgrounds, including academics, government officials, businesspeople, and others, including students.



Figure10: Celebration of Students' Annual Fest Orion

The National Association of Students of Architecture (ZONASA) - Zonal level events are attended by students from the Faculty of Architecture at Amity University in Kolkata. Students at ZONASA demonstrate their talent by taking part in a variety of events, including design competitions, dance performances, fashion presentations, and jewelry creating. Students from Sri Sri University and all other area colleges participate in the hands-on training workshops, contests, and exhibitions on art and craft that are organized by the Faculty of Architecture.



Figure 11: Students' participation at ZONASA at Amity University. Kolkata.

Sri Sri University showcase the talents and innovative ideas of the students thereby encouraging them towards displaying a diverse spectrum of artistic expressions. The students of Faculty of Architecture hosted an architectural models exhibition called “Pratibimb” - The Reflections of the Creative Mind” to showcase their works. This exhibition was not only for external visitors but also serves as an educational experience for the students themselves.



Figure 12: An Exhibition “Pratibimb - The Reflections of the Creative Mind” by the students of Faculty of Architecture to display their Models and Designs

Public access to green spaces

Sri Sri University is a place where environmental friendly practices and education combine to promote sustainable and eco-friendly practices in the campus. Away from the hustle and bustle of Cuttack, the lush green campus is tucked away in a picturesque highland area and is home to a diverse range of flora and wildlife. Each structure on the campus is designed to incorporate green spaces and sustainable landscaping with its own space for vegetation. Because they provide greater seclusion and quiet, these locations draw visitors to the university. This not only improves the campus's environmental footprint but also serves as an educational tool for students interested in ecology and sustainability. This location has a large variety of flora and fauna on the campus.

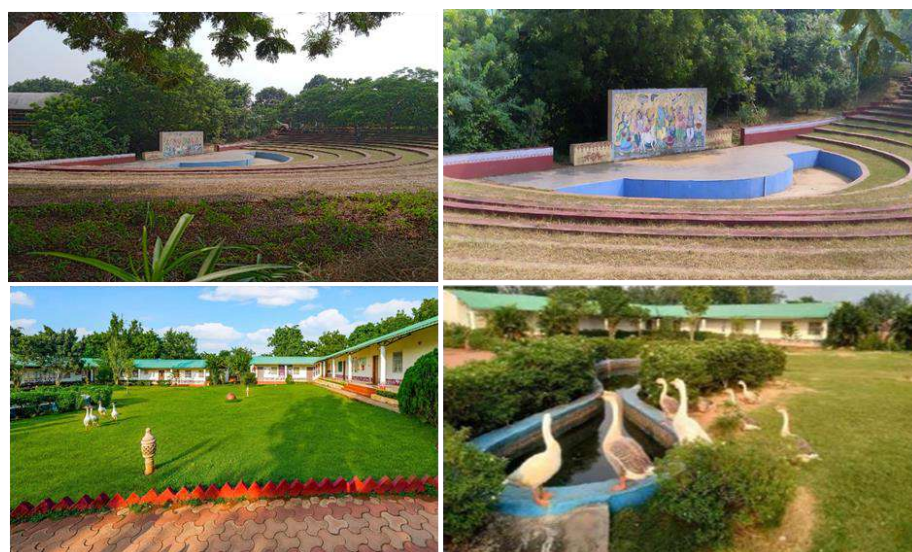


Figure 13: Open Air theatre and Landscaped open areas in Sri Sri University

Public access to a vast Open Air Theatre (OAT) is accessible during cultural events and on national holidays. The horticulture garden created by Sri Sri University's Agriculture and Horticulture department is also open to the public. The care that students and professors provide to the medicinal plants in this garden can be a form of meditation that lessens tension, anxiety, and depression. The satisfaction of seeing a plant flourish and expand can increase self-esteem and foster a happy mind-set. There are a ton of these horticulture gardens scattered over the campus. Beautifully landscaped gardens contribute to the overall aesthetic appeal of the campus, creating an inspiring and pleasant atmosphere for everyone.

There are open areas on the campus that provide a natural environment where students and staff can relax, exercise, or engage in recreational activities. These spaces offer a break from the classroom or office environment and can improve overall well-being. These open areas can also be used for various campus events. The play grounds on the campus fosters encouraging participation in sports and contributing to overall student well-being and academic success. There are badminton courts, football and basketball courts, cricket ground which are open to the students of even other universities during Sports competitions and annual festival of the University.



Figure 14: Intercollege Sports competition in Open spaces of Campus

The open areas are also used for various activities like conducting NCC and NSS camps and training workshops on the campus. The Range firing, a weapon training range was inaugurated on 03rd Aug. 2022 on the Sri Sri University campus. This range will facilitate around 3000 NCC cadets from various Institutions within 100 kms radius of Sri Sri University. 30 Cadets of 06 institutions participated in this inauguration programme and participated in firing of 22 Deluxe Rifle under the supervision of the Training JCO.



Figure 15: Range firing inauguration on the campus of Sri Sri University

Nakshatra Vanam (The healing forest):

Nakshatra Vanam is based on astrological and medical factors and it has a variety of unusual plants with therapeutic advantages. This Vanam helps astrologically to the one who is sitting and meditating under the tree, according to one's Nakshatra (Birth star). The idea for the vanam came from the book Vrukshayurveda, as suggested by Sri Sri Ravi Shankar. The garden was constructed by the Department of Dravyaguna and Sri Sri College of Ayurvedic Science and Research Hospital (SSCASRH), and the planetary positions were verified by the astrological team from the Vaidic Dharma Sansthan.

Because sitting and meditating beneath a specific tree according to one's Nakshatra has a positive impact on one's health, the vanam could be thought of as the repository of health.



Figure 16: Nakshatra Vanam at Sri Sri University

Arts and heritage contribution

To support and preserve Indian art and heritage, Sri Sri University created the 'Faculty of Arts, Communication and Indic (FACIS)' Studies. This FACIS department strives hard to promote and create a vibrant campus, which is the cornerstone of an enriched student experience. The alluring combination of dance and music has now taken center stage in everything from electronic to celluloid media. Sanskrit is a classical language that is taught in Indian studies in order to aid in the spread and preservation of Indian culture. The students have access to a

plethora of activities and events, they are more likely to engage, integrate, and feel a sense of belonging. This heightened engagement leads to higher levels of student satisfaction and overall academic success.

Sri Sri University holds the honour of successfully launching the first and largest in the world the Sri Sri Centre for Advanced Research in Kathak (SSCARK), first in India the Sri Sri Centre for Translation and Interpreting Studies, and third in India the Sri Sri Centre for Advanced Research in Bharatanatyam dance. The prestigious Padma Shri awardee Dr. Puru Dadeech Ji has been appointed as Head of the Advanced Research Centre in Kathak and as the Honorary Professor of FACIS department in Sri Sri University.

The FACIS department at Sri Sri University presents lectures, plays, concerts, and community education in an effort to serve the area as an artistic and cultural resource. In addition to modeling a commitment to lifelong learning by continuing their own professional development as artists, scholars, and educators, the faculty and staff are dedicated to the personal growth of their students by sharing their skills and knowledge in an environment of respect and collaboration. These contributions are listed below:

- Prof. Guru Ratikant Mohapatra, Dean, FACIS was invited by Temple of Fine Arts, Coimbatore to perform in the Shantanand Saraswati Music & Dance Festival, on 27th July 2022. He was also invited to conduct a three-day workshop on Odissi Dance from 28th to 30th July 2022.



Figure 17: Performance and workshop conducted at Shantanand Saraswati Music & Dance Festival

- Sanskrit is an ancient and classical language and vital to Indian culture. Hence efforts have been taken by FACIS department for its propagation and awareness by successfully celebrating the ‘SANSKRIT WEEK’ from 11th to 17th August-2022.



Figure 18: Performance and workshop conducted at Shantanand Saraswati Music & Dance Festival

- The Faculty from FACIS was invited to perform in the 44th Varsha Festival organized by Chinta-O-Chetana at Rabindra Mandap, Bhubaneswar on 16th August 2022.
- The Faculty from FACIS along with the students of BPA Odissi Dance performed in the National Dance Festival 2022 at Rabindra Bharati auditorium, Hyderabad organized by Potti Sreeramulu Telugu University, Hyderabad on 19th August 2022.



Figure 19: Faculty and Students performance at various events

- Prof. Guru Ratikant Mohapatra, Dean FACIS received “Rasikas Beloved Classical Dancer” - Vrindrani Awards 2022, from Lasya Dance Pvt.Ltd. at Music Academy, Chennai. He was also invited by Pratibha Cultural Centre, Burdhaman to perform in the Murchhana Festival and received Pratibha Samman on 21st August 2022.



Figure 20: Prof. Guru Ratikant Mohapatra, Dean FACIS receiving awards

- The faculty from FACIS department, was felicitated by Mr Ganga Prasad, the Hon'ble Governor of Sikkim, for his active role as the Director of Sri Sri Centre for Translation and Interpreting Studies, Sri Sri University, on 12th September, 2022.



Figure 21: Faculty being felicitated by the Hon'ble Governor of Sikkim

- The faculty from FACIS department, was invited to perform in Nrutyanjali -17th Annual dance festival organized by Debadasi.at Rabindra Mandap, Bhubaneswar on 14th September 2022.



Figure 22: Faculty performance at Nrutyanjali -17th Annual dance festival

- The student of Masters in Performing Arts from FACIS department performed at the G20 India Energy Week Summit on 6th Feb 2023. She also performed at the Gowri National Cultural Festival in Kerala on 17th Feb 2023.



Figure 23: Student performance at Gowri National Cultural Festival in Kerala

- The engagement with India's classical heritage and to enhance the learning experience, the students of Bachelors and Masters in Performing Arts from FACIS department, performed at various events like for delegates of seven Asian countries at a Bangalore conference organized by the Ministry of Power, Govt. of India on 27th Feb 2023, Student was invited to perform as a guest performer in the Annual Festival of Shastriyam Dance Institute, Kolkata on 28th May 2023.



Figure 24: Students performance at various events

- The Students also received awards like National Nritya Rasika Samman in Puri Utsa on 21st May 2023 and 3rd Ratha yatra Nritya Utsav organised by DCDA, Kolkata on 23rd June 2023.



Figure 25: Students receiving awards (samman) by organisers

- The faculty from FACIS department received “Kabichandra Kalicharan Pattanaik Yuva Puraskar 2021” by Odisha Sangeet Natak Akademi on 19th Dec 2022.



Figure 26: Faculty received Kabichandra Kalicharan Pattanaik Yuva Puraskar by Sangeet Natak Akademi

- Prof. Guru Ratikant Mohapatra, Dean FACIS received the International Excellence Award from Kitekraft Production on 25th Feb 2023. He also received Utkal Pratibha Samman 2023 on the auspicious occasion of Utkal Divas by ODM Public School, Bhubaneswar on 1st April 2023 and Suravi Samman 2023’ by Suravi organisation, Bhubaneswar on 8th April 2023.



Figure 27: Dean FACIS received Sangeet Natak Akademi and Suravi Samman

Record and preserve cultural heritage

Sri Sri University works diligently and tirelessly to preserve India's cultural legacy. The Faculty of Arts, Communication and Indic (FACIS) of Sri Sri University, conducted lectures, seminars, and other outreach initiatives in the nearby villages which significantly contributes to the local and global awareness-raising of the Sankrit language.

The Faculty of Art, Communication & Indic Studies, in collaboration with SRJAN, Guru Kelucharan Mohapatra, Padma Vibhushan awardee, the renowned Odissi dancer, conducts many programs to encourage and spread the local Odissi dance. In Sri Sri University we teach students classical music of India and age-old tradition of performing yoga and meditation where the students are also encouraged to conduct their research on it.

- The Faculty of Arts, Communication and Indic Studies (FACIS) at Sri Sri University, Cuttack, Odisha organized the prestigious **Sanjukta Panigrahi Award of Excellence**, a national level Solo Odissi Dance Competition on 1st and 2nd June, 2023 in collaboration with Guru Kelucharan Mohapatra Odissi Research Center and SRJAN, Bhubaneswar. It was a successful cultural bonanza, which was aimed to promote and encourage young talent in the field of Odissi dance. The winner received the prestigious Sanjukta Panigrahi Award of Excellence as well as a cash prize of 50000/- for the captivating winning performance.



Figure 28: Sanjukta Panigrahi Award of Excellence organized by FACIS in Sri Sri University

- **No table of figures entries found.** National Seminar on "Reinventing Indian English Literature Across the Post-Independence Era" was held on February 3, 2023, at 10.30 a.m. by the Faculty of Arts, Communication, and Indian Studies, Sri Sri University (FACIS) in collaboration with SRJAN, Bhubaneswar.



Figure 29: National Seminar organized by FACIS in Sri Sri University

The Faculty of Arts, Communication, and Indian Studies (FACIS), Sri Sri University. conducted the Odissi Dance Master Class, "Tryst with Odissi Season 2," by renowned Odissi dancer Mrs. Rajashri Praharaj.



Figure 30: Tryst with Odissi Season -2 organized by FACIS in Sri Sri University

The Faculty of Arts, Communication, and Indian Studies FACIS, Sri Sri University conducted a seminar on different topics like “An Approach to Postmodernism” by Prof. Sambit Panigrahi and an online MDP: Manan The Contemplative (Psychoanalytical mind of a dancer) by Madhuri Narayan.



Figure 31: Seminar and Online MDP organized by Sri Sri University

To promote the folk art of Odisha, the students of Fine Arts from FACIS department took the initiative of decorating all the exposed walls on both sides of the way to academic block with the local folk art. The gateway of the academic block, the open air theatre etc. are covered with this enduring folk art of Odisha.



Figure 32: Seminar and Online MDP organized by Sri Sri University

Yoga, an ancient cultural heritage of India, is essentially experiential and transcendental which once upon a time, was pursued by handful seekers abiding in secluded places away from social life, has now a day, become an academic pursuit and is being accepted in the curriculum of schools, colleges and universities. To promote this ancient tradition of Yoga, Sri Sri University not only assimilates and nurtures the systematic knowhow of this science but also the parallel applied component makes the learning hands-on, joyful and relational.



Figure 33: Awareness of Yoga for physical well-being by Sri Sri University

Sustainable Practices

In Sri Sri University, to promote sustainable transportation practices, a combination of public transit, walking, cycling, car-sharing, electric vehicles, and other options are adopted that create a diverse and flexible transport system that reduces dependency on fossil fuels and enhances mobility and accessibility. Walking is promoted on campus as a way to enhance both mental and physical well-being. Signage encouraging sustainable walking is erected in various places, mentioning the number of steps required to get from one place to another and the number of calories burned. This encourages people to walk. On campus, bicycles are provided for both security officers and in-house students. Staff and students are encouraged to use electric vehicles on campus. In order to promote sustainable transportation, it is advised that staff and students who are staying off campus in Bhubaneswar and Cuttack cities have access to buses.



Figure 34: Walking signage at different locations in University



Figure 35: Sustainable transportation practices adopted at Sri Sri University

The movement of vehicles is reduced in the campus with the provision of Shuttle vans, cycles, battery bikes and buses for mass transportation. The following is the ratio of the number of vehicles to the population at the campus.

- Number of Cars Actively Used and Managed by University: 6
- Number of Cars Entering the University Daily: 72
- Number of Motorcycle Entering the University Daily: 150
- Total number of Vehicles (cars and motorcycles) Divided by Total Campus Population

S. No.	Particulars	Number
1	Total number of motorcycles	150
2	Total number of cars	72
3	Total population	3,714

Total Number of Vehicles/divided by total campus population = $222/3714 = 0.059$

Shuttle Service



Figure a



Figure b



Figure c

The shuttle service provided on the campus for staff use reduce the usage of private vehicles. The following are some of the points of shuttle service.

1. Shuttle service is provided by university, regular and free.
2. Generally, university staffs use shuttles within the campus. This service discourages the use of private vehicles within the campus and contribute to the carbon credits by using significantly least use of fossil fuels (**Figure a**)
3. Recently University has provided electric vehicle. The vehicle extends its services to the university staff and outsiders. In the near future a few more electric vehicles will be deployed in the campus (**Figure b**).
4. A winger is used inside the university (**Figure c**)

Number of Shuttles operated in the University: **3** (three)

- Average Number of Passengers of Each Shuttle: **9** (nine)
- Total trips of Each Shuttle Services Each day: **20** (Twenty)
- Zero Emission Vehicles (ZEV) Policy on Campus

Every week, all of the staff and students who are staying on campus engage in a cycling rally to promote riding on campus for better health benefits and to adopt sustainable means of travel for short trips.



Figure 36: Promoting cycling on Sri Sri University campus

Walking is a form of exercise that requires no special equipment and minimal physical fitness. Hence Sunday morning was full of exercises and warm-ups on the SSU campus to develop a sense of deep tranquillity. It was indeed an extremely healthy morning for all participants. Team Orion in collaboration with Cuttack Runners had organized this event on 6th November, 2022.



Figure 37: Development of sense of deep tranquillity through Sunday mornings walks on SSU campus

Promote sustainable commuting

Sri Sri University encourages environmentally friendly transportation, and it's important to note that the university operates a bus service to carry Day Scholars to and from the campus, which lessens traffic and pollution while also improving air quality. It is recommended that pedestrian access be given priority on campus because students can walk between buildings and visit all buildings without the use of a vehicle. By moving to more sustainable transport, we will gain several advantages for the environment and our health, such as less air pollution and noise. Less reliance on finite fossil fuels. Future-proofed transportation that can run on renewable energy sources.

1					
Bhubneshwar Route 1			Bhubneshwar Route 1		
Sl. No.	Pick up points	Time	Sl. No.	Pick up points	Time
1	Lingraj Station	5:50 AM		Fire station	7:45 AM
2	Bhim Tank	5:52 AM		Khandegiri	7:50 AM
3	Naka Gate	5:54 AM	1	Lingraj Station	8:05 AM
4	Airport Chowk	5:55 AM	2	Bhim Tank	8:10 AM
5	Ganga Nagar Chowk	5:57 AM	3	Naka Gate	8:11 AM
6	Shiripur Chowk	6:00 AM	4	Airport Chowk	8:15 AM
7	Unit 9	6:07 AM	5	Ganga Nagar Chowk	8:20 AM
8	Shastri nagar chowk	6:08 AM	6	Shiripur Chowk	8:25 AM
9	The World Chowk	6:10 AM	7	Unit 9	8:30 AM
10	Jaidev Vihar	6:12 AM	8	Shastri nagar chowk	8:30 AM
11	Mayfair Chowk	6:14 AM	9	The World Chowk	8:32 AM
12	Nalco Chowk	6:15 AM	10	Jaidev Vihar	8:35 AM
13	Omfed Chowk	6:16 AM	11	Mayfair Chowk	8:37 AM
	Chandershekharpur petrol pump	6:18 AM	12	Nalco Chowk	8:42 AM
14	Damna Chowk	6:20 AM	13	Omfed Chowk	8:45 AM
	Shailash vihar			Chandershekharpur petrol pump	8:47 AM
16	DAV Chowk	6:23 AM	14		8:47 AM
17	Club town	6:25	15	Damna Chowk	8:50 AM
	Chandershekharpur police station	6:27 AM			
18	Patia Big Bazar	6:30 AM	17	Club town	8:51 AM
				Chandershekharpur police station	8:52 AM
20	Prashanti Vihar	6:35 AM	18		8:55 AM
21	Raghnath pur	6:40 AM	19	Patia Big Bazar	9:00 AM
22	SSU	6:50 AM	20	Prashanti Vihar	9:05 AM
			21	Raghnath pur	9:05 AM
			22	SSU	9:20 AM

CUTTACK CDA ROUTE-1			CUTTACK CDA ROUTE-1		
Sl. No.	Pickup points	Time	Sl. No.	Pickup points	Time
1	Chodwar Gandhi chowk	5:50	1	Chodwar Gandhi chowk	8:00
2	Jobra	6:05 AM	2	Jobra	8:20 AM
3	Medical Chowk	6:07 AM	3	Medical Chowk	8:22 AM
4	Radio Station	6:09 AM	4	Radio Station	8:25 AM
5	Barabati Stadium	6:13 AM	5	Barabati Stadium	8:30 AM
6	Deer Park	6:15 AM	6	Deer Park	8:35 AM
7	Bidanasi chowk	6:20 AM	7	Bidanasi chowk	8:40 AM
			8	Krishak bazar chowk	8:42 AM
9	Sati Choraha chowk	6:21 AM	9	Sati Choraha chowk	8:45 AM
10	Ashwini hospital chowk	6:22 AM	10	Ashwini hospital chowk	8:47 AM
11	CDA sector 9	6:25 AM	11	CDA sector 9	8:50 AM
12	CDA sector 7	6:28 AM	12	CDA sector 7	8:55 AM
13	CDA sector 8, Tampe road	6:31 AM	13	CDA sector 8, Tampe road	9:00 AM
14	CDA sector 10	6:35 AM	14	CDA sector 10	9:05 AM
15	CDA sector 11	6:36 AM	15	CDA sector 11	9:10 AM
16	SSU	6:50 AM	16	SSU	9:25 AM

Cuttack CDA Route 2 (Only 2019 Batch)			Cuttack CDA Route 2		
Bus will reach to SSU at 6:50 am			Bus will reach to SSU at 9:30 am		
Sl. No.	Pickup Points	Time	Sl. No.	Pickup Points	Time
1	Chawadiaganj Outpost	6:00 AM	1	Chawadiaganj Outpost	8:30 AM
2	Harabali Mandap	6:05 AM	2	Harabali Mandap	8:34 AM
3	Shikharpur	6:10 AM	3	Shikharpur	8:40 AM
4	OMP	6:14 AM	4	OMP	8:43 AM
5	Link Road	6:17 AM	5	Link Road	8:46 AM
6	Nishamani Hall	6:18 AM	6	Nishamani Hall	8:47 AM
7	Arundaya market	6:20 AM	7	Arundaya market	8:50 AM
8	Bazaar india	6:22 AM	8	Bazaar india	8:51 AM
9	Badambadi	6:27 AM	9	Badambadi	8:55 AM
10	City College	6:30 AM	10	City College	8:58 AM
11	Puri Ghat Thana	6:33 AM	11	Puri Ghat Thana	9:00 AM
12	High Court	6:35 AM	12	High Court	9:02 AM
13	Judicial Academy	6:38 AM	13	Judicial Academy	9:05 AM
14	SSU	6:50 AM	14	SSU	9:20 AM

Figure 38: Route Chart of Buses

The above Route chart is for the Shuttle buses for staff and student. The time of pick up and pick points are mentioned. This facility promotes use of less private vehicles.



Figure 39: Parking area for Buses, Cars, Two wheelers and Staff bicycles

In addition to bus service, the University also provide the following communication facilities on the campus.:

1. In the university campus bicycles have been provided to the staff like security guards, gardeners, etc. The staff is discouraged to use private vehicles.
2. The use of battery operated electric bicycles are encouraged in the campus. Many staff and students have been using such vehicles in the campus.
3. A few staff have been using electric bike in the campus.
4. An electric vehicle has been provided, which provides its services to the staff and other people at no cost.
5. University has an energy use policy in place and is committed to develop a zero emission campus
6. University has an energy conservation pledge in place. The issues of zero emission are addressed in the pledge.

Average Number of Zero Emission Vehicles (e.g. bicycles, snowboard, electric car, etc.) on campus per day: 60 (sixty)

Total Number of Zero Emission Vehicles (ZEV) Divided by Total Campus Population

$$58/3714 = 0.015$$

Total Ground Parking Area (m²): 8350 m²



Figure a



Figure b

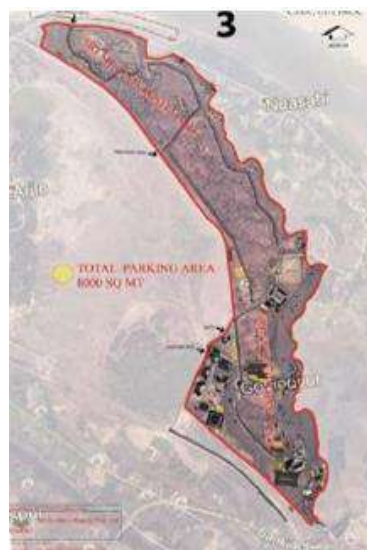


Figure c



Figure d

Description:

1. Parking area for Buses and cars (**Figure a**)
2. Parking area for cars and two wheelers (**Figure b**)
3. A map of university campus showing parking area (**Figure c**)
4. Parking area for cars and two wheelers (**Figure d**)

Total main campus area: 840498.58 m²

Total Parking Area = 8350 m²

Ratio = 0.99%

Allow remote working

During pandemic, all the staff were allowed remote working. It resulted in saving of resources.

But after pandemic, we do not have remote policy in our University.

Affordable housing for employees

Sri Sri University provides the employees coming from other towns and cities, affordable housing on the campus. The housing apartments for employees is geographically well distributed on the campus. There is a well implemented policy on affordable housing for the employees. This quality and affordability of housing in the campus has positive affect on both physical and mental health of the employees making them give their best at workplace.

The process is non tedious for applying for the housing for employees as per the policy. The desiring employee needs to apply for it and after assessing the applications received and the housing units available, it is allotted to them. The employees staying on the campus can enjoy the green campus and all the sports facilities provided on the campus.



Figure 40: Faculty accommodation on the campus

At Sri Sri University, affordability for students who are from out station locations in availing accommodation in the campus is always taken care of. There are 6 hostel buildings with various amenities for students. 3 of them are for girls and 3 of them are for boys. There are two types of rooms available - Air Conditioned and Non-Air Conditioned. Hostel Building 1, 2 and 3 are allocated to girls only. Hostel Building (HB)1 is having twin-sharing non-AC rooms with 132 beds. HB 2 is having twin sharing AC rooms with 10 beds, triple sharing

AC rooms with 12 beds triple sharing non-AC rooms with 146 beds. HB 3 is having triple sharing non-AC rooms with 180 beds, four-sharing non-AC rooms with 108 beds. Hostel Building 4, 5 and 6 are allocated to boys only. HB 4 is having triple sharing non-AC rooms with 60 beds, four-sharing non-AC rooms with 252 beds. HB 5 is having twin sharing AC rooms with 6 beds, triple sharing non-AC rooms with 372 beds. HB 6 is having twin sharing AC rooms with 8 beds, twin sharing non-AC rooms with 164 beds. The cost of the hostel rooms are as follows:

- Twin sharing AC accommodation: Rs. 70,200 per student for each semester.
- Twin sharing non-AC accommodation: Rs. 35,100 per student for each semester.
- Triple sharing AC accommodation: Rs. 60,200 per student for each semester.
- Triple sharing non-AC accommodation: Rs. 30,100 per student for each semester.
- Four sharing non-AC accommodation: Rs. 25,100 per student for each semester.

When compared to the accommodation facilities found outside the campus, the campus accommodation is much more affordable. The mess charges are included in it as well. Also, the hostel mess – referred to as “Kaivalya” serves only nutritious vegetarian “Satwik” food that has less carbon footprint compared to Non-vegetarian food.



Figure 41: Students' Housing at SSU Campus

Pedestrian priority on campus

Cycling and pedestrianism are encouraged at Sri Sri University since they are essential components of any sustainable transportation plan. Additionally, policies have been put in place to encourage cycling and pedestrianization on campus.

On campus, pedestrian mobility needs to be promoted by offering the following:

- In order to encourage pedestrianization on campus, walkways have been designed to allow easy

access to common amenities. Specifically designated covered routes (top and sides) have been created to ease walking.

Barrier Free Access

One of the Sustainable Development Goals (SDGs) for ensuring a sustainable future is inclusion. Barrier-free access to buildings and campuses is also required under NBC standards. In light of this, the following regulations could be implemented:

- The campus is barrier-free, enabling people with physical disabilities to enter without difficulty.
- Accessibility features such as guide rails, ramps, and textures have been incorporated as needed. Appropriate signage has been used to indicate areas that are classified as barrier-free.

Preliminary Estimates of User Profile in SSU

- Cars --- 25%
- 2 Wheelers—15%
- College Bus--- 60%
- Staff (on campus) --- 10%
- Students (on Campus) ---60%

Pedestrian Path on Campus

Pedestrian paths are available, designed for safety and convenience.

Description

1. Murram roads are safety and ideal for walking and jogging.
2. Paved pathways are available in administrative blocks and hostels. Generally the entry of vehicles is prohibited in these areas.
3. Short paths to avoid the vehicles.
4. Solar street lamps and LED Street Lamps for pedestrians.
5. Paved pathways to residential block.

Approximate daily travel distance of a vehicle inside your campus only (in Kilometers): 2.0



Figure 42: Paved pathways to encourage pedestrianization

Local authority collaboration regarding planning and development

In order to develop a different vision for the community's growth and development that can contribute to economic development and enhance the residents' quality of life, Sri Sri University works closely with the BDA (Bhubaneswar Development Authority) and industrial partners. Additionally, it is crucial in spreading knowledge of the SDGs through forums, public lectures, and community events. It does initiatives through consulting and works with industry partners to promote sustainable building approaches that support community uplift.



Figure 43: Workshop on Sustainable Building with CSE

The faculty of Sri Sri University in collaboration with by CSE (Centre for Science and Environment) and RACHNA (Resilient, Affordable & Comfortable Housing Through National Action) participated in programs like 'Guiding self-built housing towards sustainability and thermal comfort', 'Energy Efficiency in the new Commercial Buildings' through Energy Conservation Building Code (ECBC) to develop understanding of the sustainability and basics of thermal comfort needs and its applicability in affordable housing.



Figure 44: Faculty of Architecture working on Energy Efficient Design of an Apartment building in Odisha

The Faculty of Architecture have undergone training programs in collaboration with International Finance Corporation (IFC) funded by World Bank to train the students about sustainable practices to be adopted and to develop increased affordability and greater energy efficiency through renewable energy, which can be adopted in planning and designing, as many types of renewable energy are cost-competitive with traditional energy sources.

Planning development - new build standards

The Sri Sri University has been taking steps to embrace the pillars of sustainability as a whole since it also improves the quality of campus life. It is working hard to find viable answers to build a more inventive, inclusive, and sustainable green space on campus that is constructed of sustainable materials.

The Gurukul building on campus is a sustainable structure constructed in the classic vernacular form using rammed earth. Rammed earth is used because it offers greater thermal mass, temperature and noise management, strength and durability, low maintenance, and fire resistance because the university is located in a hot and humid region of Odisha. Because laterite is a naturally occurring stone with cooling properties, it is also widely employed in construction projects due to its affordability, environmental friendliness, low energy consumption, and low toxicity during production and application. Jack arches, which are used to form the roof, have the benefit of being made of very light and manageable pieces of material.

The openings below the jack roof, in the Gurukul building are provided with traditional coir mats which when sprinkled with water gives a cooling effect during day time in hot summer and the mats can be rolled during night to let in cool breeze.



Figure 45: Gurukul Building (Vedic school)



Figure 46: Achievements of SSU in gaining Sustainability

Description:

- Natural lighting and ventilation, sustainable design, water efficient appliances, energy efficient appliances and natural stone (Laterite) is used in the construction of the building.
- Sri Sri University received “Green Champion National Award” in 2018 by Indian Green Building Council.
- A student chapter of IGBC started in 2018 to impart education on Green Architecture and inspire students for a sustainable tomorrow.

Building on brownfield sites

A decade ago, the Sri Sri University was a rocky, desolate area; today, it is a verdant haven. With 188 acres of quarry land, it is a spectacular, expansive campus with both residential and non-residential amenities. The university, which occupies a former quarry, is designed as a collection of simple buildings surrounded by bushes, trees, and perfectly manicured lawns that provide a calm atmosphere. In keeping with the university's theme, "an ecologically sensitive green campus," every building structure has been thoughtfully placed in the low-lying quarry area to prevent additional site damage.



Figure 47: Vast quarry land before the beginning of construction work

As the buildings are situated in the quarry, the main academic block is at a level of two storied below the road level. As the site is located in Odisha which is situated at a cyclone prone coastal area, this sunken building helps in cutting down the devastating cyclonic winds and keeping the structure safe.



Figure 48: Academic Blocks ‘Shruti’ and “Kirti”

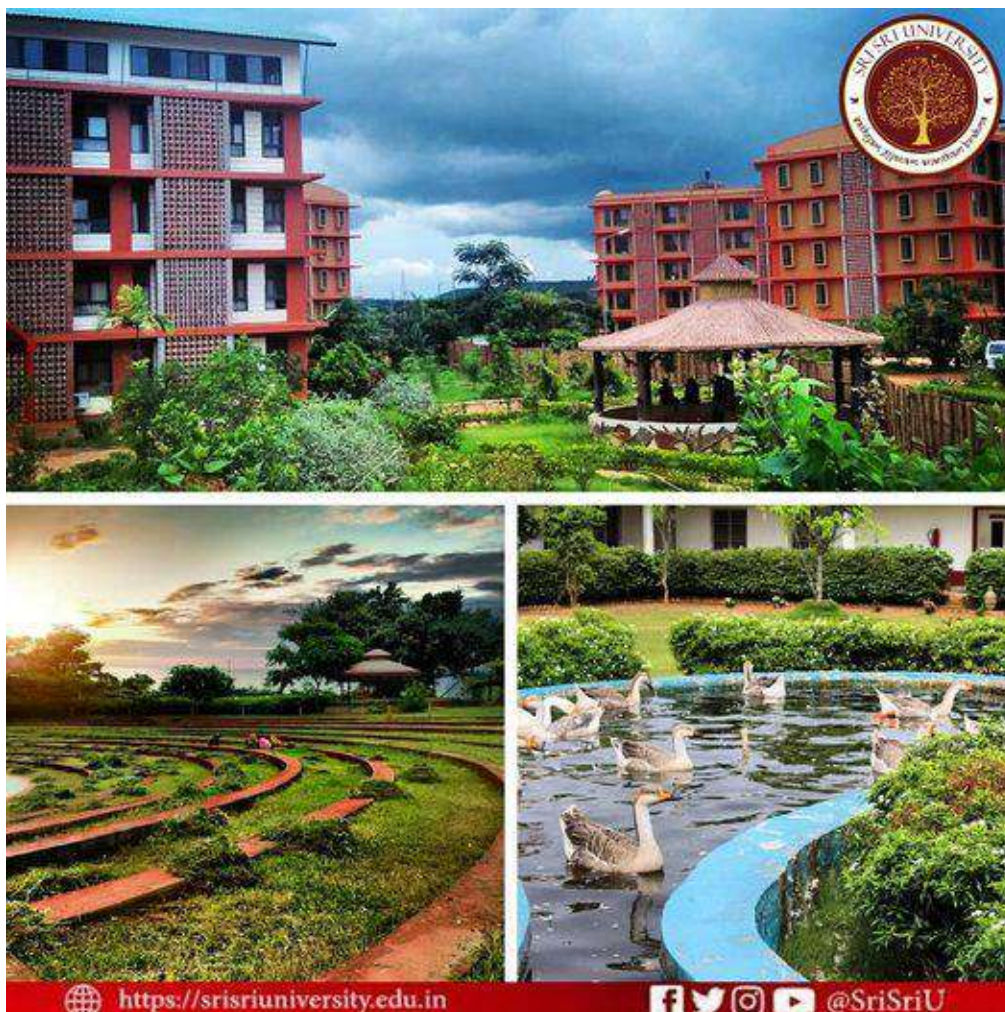


Figure 49: The barren quarry land turned into lush green campus

Description:

Founded in 2009 as a hub for top-notch education in India, Sri Sri University (SSU) was inspired by Sri Sri Ravi Shankar Ji. The University provides a variety of important, distinctive, and state-of-the-art undergraduate and graduate degree programs, as well as short-term, diploma, certificate, and doctorate studies that aim to offer the best of western innovation and maintain the age-old wisdom of the east. The campus is situated between latitudes 20°27'00" and 20°28'04" N and longitudes 85°47'31" and 85°48'00" E. Situated on a hilltop at the bank of a tributary of the Mahanadi river in the outskirts of Cuttack, the expansive campus spans 188 acres. The stunning campus is reminiscent of the historic Indian universities of Nalanda and Takshila. It was created by well-known architects who specialize in educational architecture. The university's surroundings, which include a number of modern buildings surrounded by bushes, trees, and well-kept lawns, have a calm atmosphere.

- Additional Evidence: <https://srisriuniversity.edu.in/campus-360-degree/>
<https://ssuaych.org/>
- Video Link: <https://www.youtube.com/watch?v=Wn7e25k51ZQ>

SITE PLAN

